

# CODYBA

---

## Dynamical Behaviour for Buildings

---

This software determinates the heat flows in a building. It is aimed for design offices, teaching and research organisms.

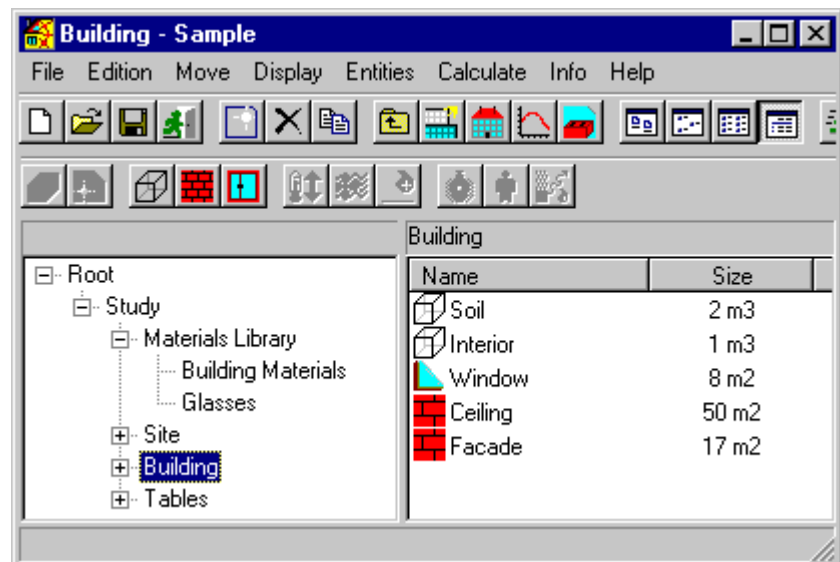
CODYBA software permits to estimate the instant heating or cooling powers needed to maintain a given set-point, or to calculate the interior temperatures when the heating or cooling system is insufficient. Humidity is treated in the same way.

---

Its particularity is that the input entities are those currently utilised by the professionals, while the calculation models are treated in a transparent manner.

Within the interface, each "entity" is associated to a graphical representation, that permits to manipulate it by operations of "copy", "paste", "drag-and-drop" type.

The input screens are accessible by double-click of the mouse.



The basic data are the building geometry and constitution :

- **walls** (with the materials of layers and the surface parameters)
- **windows** (possibility for solar masks)
- **air volumes**

The main parameters are :

- **the climate** : several meteorological files for different towns in the world are supplied
- **internal loads** (from lighting, persons, diverse machines)
- **regulators** (powers and set-points for temperature, humidity and ventilation)

Internal loads and regulators can have powers or control parameters as a **time dependent function**.

**Tracing functions** permit to visualise the results or to export them to data processing software.

An **on-line help** with samples is always accessible to guide the user for the input sessions choices.

# CODYBA

**Required hardware** : Windows 95/98/NT/2000/XP, Pentium, 20 Mo RAM, 12 Mo disk

## **Base price of the monozone version (1Z)**

1 post : 499 euros net of VAT  
n posts ("site" licence) : 1250 euros net of VAT

## **Base price of the multizone version (NZ)**

1 post : 999 euros net of VAT  
n posts ("site" licence) : 2500 euros net of VAT

**Special price for Department of Education (and training organisms)** : ½ \* Base price

These prices include free port and are available till 31/12/2004. No VAT, but for EC (19.6 %). The "site" licence corresponds to an unlimited number of posts on the same workplace. Upgrade from version 1Z to version NZ is made by price gap between the versions.

### **Address Command to**

**CETHIL-ETB (/Jean NOËL)**  
INSA de Lyon – Bât. Freyssinet  
40, avenue des Arts  
F-69100 Villeurbanne

### **Payement to**

**INSAVALOR**  
66 boulevard Niels Bohr  
BP 2132  
F-69603 Villeurbanne Cedex

### **Bank reference (for bank transfer) :**

Banque Populaire LYON AGENCE 019  
Banque : 13907  
Compte : 00201938688 /52

### **Contacts**

**General** : [mail@jnlog.com](mailto:mail@jnlog.com) (or tel : (33) 4.72.43.80.94 / fax : (33) 4.72.43.85.22)

J. NOËL : [noel@etb.insa-lyon.fr](mailto:noel@etb.insa-lyon.fr)      J.J. ROUX : [roux@etb.insa-lyon.fr](mailto:roux@etb.insa-lyon.fr)

**Demand of CODYBA demonstration version** (addressed to CETHIL-ETB /Jean NOËL, this version compared to the commercial version, only contains a special message)

Name :

Organism :

Address :

**Or free download** : <http://www.jnlog.com/download.htm>